

Product Name: Anti-Internalin A (InIA) mAb (2B3)

Overview

Antigen Target	Internalin A (InIA)
Epitope	
Antibody type/clonality	Monoclonal IgG antibody
Clone Number	2B3
Source/Host	Mouse
Species Reactivity	
Applications	ELISA, WB

Properties

Form	Liquid
Purity	
Specificity	
Affinity	
Concentration	1.93 mg/mL
Application working concentration	ELISA (1:1,000-1:10,000) Western blotting (1:500- 1:5,000)
Storage	1 x PBS

Supply & Storage

Storage Conditions	-20°C in 1 x PBS. Avoid repeated freeze and thaw cycles.
Standard Shipping Volumes	200 µL
Shipping Conditions	

Additional Information

References on Antibody

Hearty S., Leonard P., Quinn J., O'Kennedy R. 'Production, characterisation and potential application of a novel monoclonal antibody for rapid identification of virulent *Listeria monocytogenes*'. *Journal of Microbiological Methods*. 2006;66(2):294- 312

Tully, E., Hearty, S., Leonard, P. and O'Kennedy, R., 2006. The development of rapid fluorescence-based immunoassays, using quantum dot-labelled antibodies for the detection of *Listeria monocytogenes* cell surface proteins. *International journal of biological macromolecules*, 39(1), 127-134.

Application Information

References on Antibody (continued)

Gilmartin, N., Gião, M.S., Keevil, C.W. and O’Kennedy, R., 2016. Differential internalin A levels in biofilms of *Listeria monocytogenes* grown on different surfaces and nutrient conditions. *International journal of food microbiology*, 219, 50-55.

SDS-PAGE and Western blotting analysis of anti-InIA mAb, 2B3 (Fig.1-2)

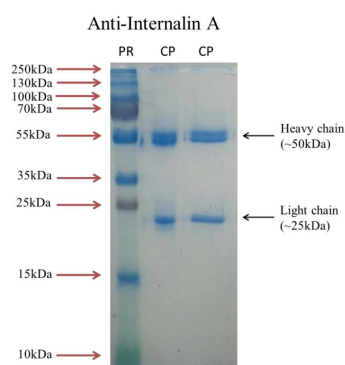


Fig. 1 SDS-PAGE analysis of anti-InIA mAb, 2B3

The figure shows the SDS-PAGE containing the light (~ 25 kDa) and heavy chains (~ 50 kDa) of anti-InIA mAb, 2B3.

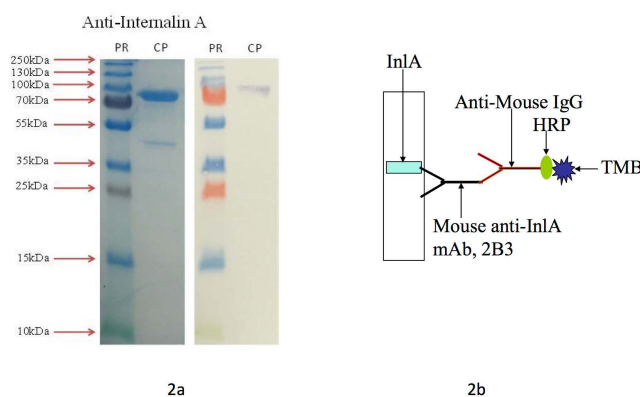


Fig. 2 Detection of InIA using mouse anti-InIA mAb, 2B3

Figure 2a shows the SDS-PAGE containing purified InIA (~ 80 kDa) and the InIA-specific band on Western blotting was probed with mouse anti- InIA mAb, 2B3 followed by HRP-labelled anti-mouse IgG. MW: Pre-stained protein ladder; CP: Concentrated Protein. The figure 2b shows the schematic diagram of the Western blotting analysis.

Contact Information

Name	Richard O'Kennedy	Address	School of Biotechnology, Dublin City University, Glasnevin, Dublin 9, Ireland.
Telephone	+353 1 700 5319		
E-mail	richard.okennedy@dcu.ie		