

Product Name: Anti-Human cardiac troponin I (cTnI) Fab (4G5)

Overview

Antigen Target	Human cardiac troponin I (cTnI)
Epitope	QPLELAGLGFAELQ
Antibody type/clonality	Recombinant Fab antibody
Clone Number	4G5
Source/Host	Chicken
Species Reactivity	
Applications	ELISA, WB, Biacore

Properties

Form	Liquid
Purity	
Specificity	
Affinity	$1.55 \pm 0.82 \times 10^{-9} \text{ M}$
Concentration	0.28 mg/mL
Application working concentration	ELISA (1:100-1:500) Western blotting (1:100-1:500)
Storage	1 x PBS

Supply & Storage

Storage Conditions	-20°C in 1 x PBS. Avoid repeated freeze and thaw cycles.
Standard Shipping Volumes	200 µL
Shipping Conditions	

Additional Information

Reference on Antibody	Conroy, P.J. (2011) Exploiting novel antibodies for the early detection of cardiac disease. PhD thesis, Dublin City University.
-----------------------	---

Application Information

SDS-PAGE, Western blotting and Biacore analysis of anti-cTnI Fab, 4G5 (Fig.1-2)

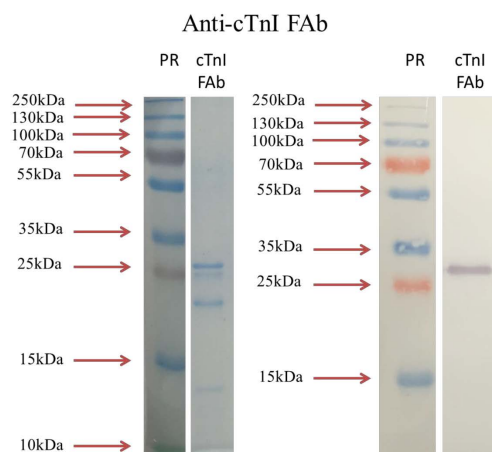


Fig. 1 SDS-PAGE and Western blotting analysis of purified anti-cTnI Fab

Figure 1a shows the SDS-PAGE containing purified anti-cTnI Fab (~ 50 kDa) and the anti-cTnI Fab specific band on Western blotting was probed with mouse anti-HA IgG. PR: Pre-stained protein ladder.

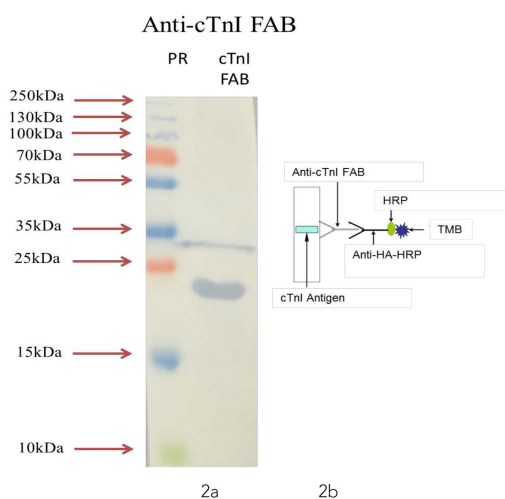


Fig. 2 shows the specific band on Western blotting (~23kDa) of the cTnI antigen probed with the anti-cTnI FAB. PR: Pre-stained Page Ruler; cTnI: cTnI Antigen. Figure 2b shows the schematic diagram of Western blotting analysis.

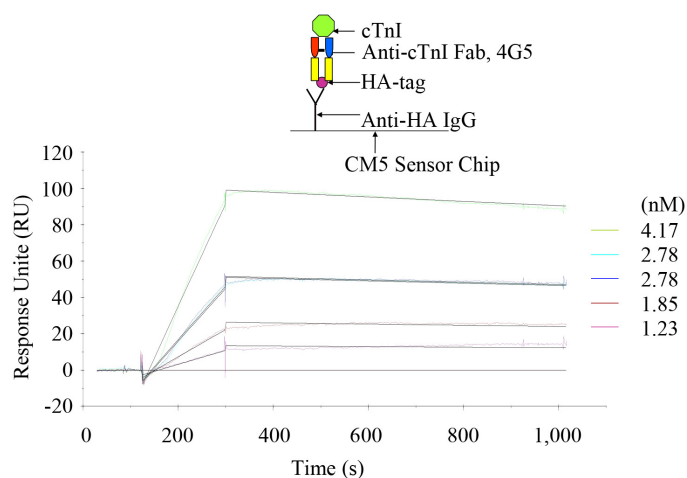


Fig. 3 Kinetic analysis of interactions between anti-cTnI Fab and cTnI using the Biacore 3000 system

The coloured lines represent the response data of various concentrations of cTnI. The black lines represent the localised fit to the response data, shown as coloured lines.

Contact Information

Name	Richard O’Kennedy	Address	School of Biotechnology, Dublin City University, Glasnevin, Dublin 9, Ireland.
Telephone	+353 1 700 5319		
E-mail	richard.okennedy@dcu.ie		