

**Product Name:** Anti-Human cardiac troponin I (cTnI) scFv (4G5)

## Overview

Antigen Target	Human cardiac troponin I (cTnI)
Epitope	
Antibody type/clonality	Recombinant scFv antibody
Clone Number	4G5
Source/Host	Chicken
Species Reactivity	
Applications	ELISA, WB, Biacore

## Properties

Form	Liquid
Purity	
Specificity	
Affinity	$1.16 \pm 0.69 \times 10^{-9} \text{ M}$
Concentration	0.18 mg/mL
Application working concentration	ELISA (1:10,000-1:100,000) Western blotting (1:5,000-1:50,000)
Storage	1 x PBS

## Supply & Storage

Storage Conditions	-20°C in 1 x PBS. Avoid repeated freeze and thaw cycles.
Standard Shipping Volumes	200 µL
Shipping Conditions	

## Additional Information

Reference on Antibody	Conroy, P.J. (2011) Exploiting novel antibodies for the early detection of cardiac disease. PhD thesis, Dublin City University.
-----------------------	---

## Application Information

### SDS-PAGE, Western blotting and Biacore analysis of anti-cTnI scFv, 4G5 (Fig.1-2)

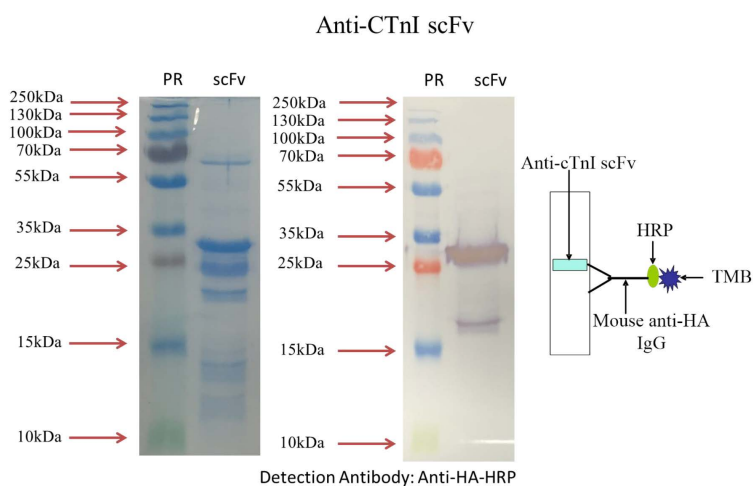


Fig. 1 SDS-PAGE and Western blotting analysis of purified anti-cTnI scFv 4G5

Figure 1a shows the SDS-PAGE containing purified anti-cTnI scFv (~28 kDa) and the anti-cTnI scFv-specific band on Western blotting which was probed with mouse anti-HA IgG. PR: Pre-stained Page Ruler; scFv: eluted scFv. Figure 1b shows the schematic diagram of Western blotting analysis.

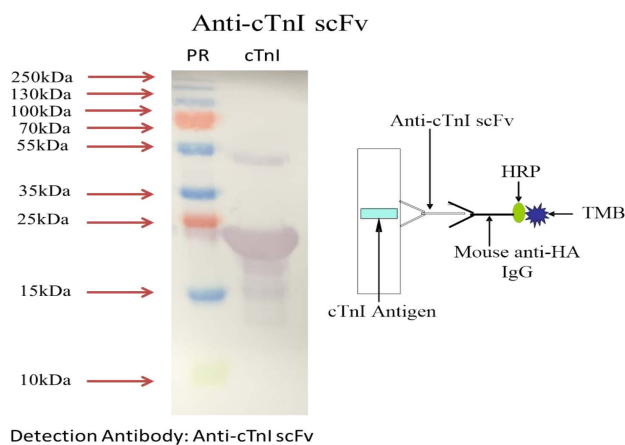


Fig. 2 Western blotting analysis of cTnI antigen probed with the anti-cTnI scFv 4G5

Figure 2a shows the specific band on Western blotting (~23kDa) of the cTnI antigen probed with the anti-cTnI scFv. PR: Pre-stained Page Ruler; cTnI: cTnI Antigen. Figure 2b shows the schematic diagram of Western blotting analysis.

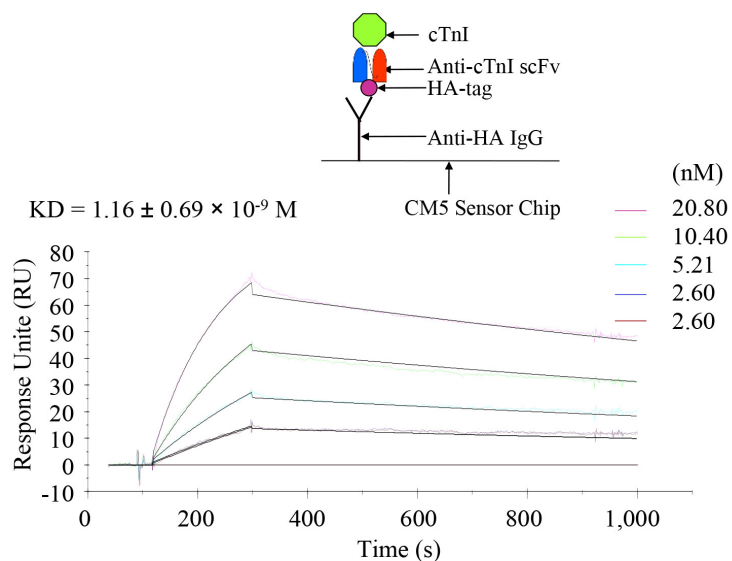


Fig. 3 Kinetic analysis of interactions between anti-cTnI scFv 4G5 and cTnI using the Biacore 3000 system

The coloured lines represent the response data related to various concentrations of cTnI. The black lines represents the localised fit to the response data, shown as coloured lines.

## Contact Information

<b>Name</b>	Richard O'Kennedy	<b>Address</b>	School of Biotechnology, Dublin City University, Glasnevin, Dublin 9, Ireland.
<b>Telephone</b>	+353 1 700 5319		
<b>E-mail</b>	richard.okennedy@dcu.ie		