

Product Name: Anti-Myeloperoxidase (MPO) scFv (B10B)

Overview

Antigen Target	Myeloperoxidase (MPO)
Epitope	Not defined
Antibody type/clonality	Recombinant scFv antibody
Clone Number	B10B
Source/Host	Chicken
Species Reactivity	
Applications	ELISA, WB

Properties

Form	Liquid
Purity	
Specificity	High
Affinity	$1.86 \times 10^{-10}M$
Concentration	1.52 mg/mL
Application working concentration	ELISA (1:1,000-1:10,000) Western blotting (1:1,000-1:5,000)
Storage	1 x PBS

Supply & Storage

Storage Conditions	-20°C in 1 x PBS. Avoid repeated freeze and thaw cycles.
Standard Shipping Volumes	200 µL
Shipping Conditions	

Additional Information

Reference on Antibody	McDonnell B. (2010) Development of novel antibody-based diagnostics for the early and rapid detection of cardiac markers. PhD thesis, Dublin City University.
-----------------------	---

Application Information

SDS-PAGE and Western blotting Analysis

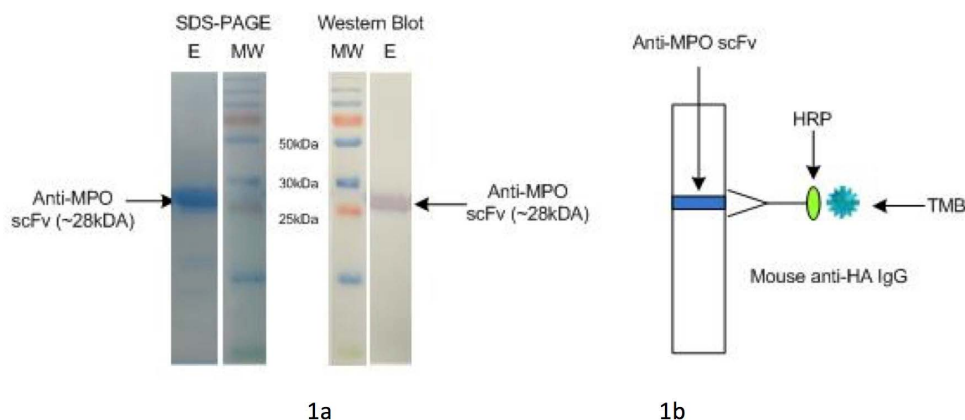


Fig. 1 SDS-PAGE and Western blotting analysis of purified anti-MPO scFv.

Figure 1a shows the SDS-PAGE containing purified anti-MPO scFv (~ 28 kDa) and the anti-MPO scFv-specific band on Western blotting was probed with mouse anti-HA IgG. MW: Pre-stained protein ladder; E: elution. The figure 1b shows the schematic diagram of the Western blotting analysis.

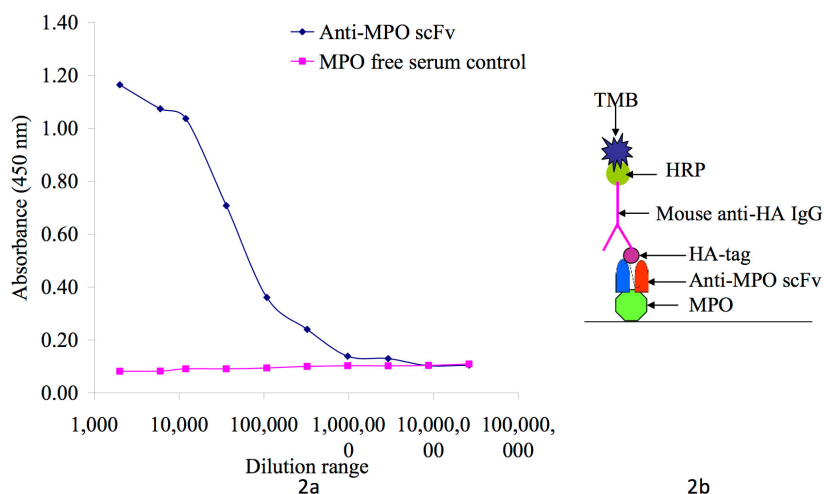


Fig. 2 Direct ELISA analysis of purified anti-MPO scFv titre.

Figure 2a shows the titre determined as the scFv concentration required to produce a signal 3 times greater than the background signal. The figure 2b shows the schematic diagram of the ELISA analysis.

Contact Information

Name	Richard O'Kennedy	Address	School of Biotechnology, Dublin City University, Glasnevin, Dublin 9, Ireland.
Telephone	+353 1 700 5319		
E-mail	richard.okennedy@dcu.ie		