

Product Name: Anti-free Prostate Specific Antigen (fPSA) scFv (B8H8)

Overview

Antigen Target	Prostate Specific Antigen (fPSA)
Epitope	See reference 1t
Antibody type/clonality	Monoclonal scFv
Clone Number	B8H8
Source/Host	Chicken
Species Reactivity	Human
Applications	ELISA, WB

Properties

Form	Liquid
Purity	
Specificity	
Affinity	
Concentration	1.6 mg/mL
Application working concentration	ELISA (1:1,000 – 1:10,000)
Storage	1 x PBS

Supply & Storage

Storage Conditions	-20°C in 1 x PBS. Avoid repeated freeze and thaw cycles.
Standard Shipping Volumes	100 µL
Shipping Conditions	

Additional Information

References on Antibody

1. Conroy, P. J., Law, R. H., Gilgunn, S., Hearty, S., Caradoc-Davies, T. T., Lloyd, G., ... & Whisstock, J. C. (2014). Reconciling the Structural Attributes of Avian Antibodies. *Journal of Biological Chemistry*, 289(22), 15384-15392.
2. Spain, E., Gilgunn, S., Sharma, S., Adamson, K., Carthy, E., O'Kennedy, R., & Forster, R. J. (2016). Detection of prostate specific antigen based on electrocatalytic platinum nanoparticles conjugated to a recombinant scFv antibody. *Biosensors and Bioelectronics*, 77, 759-766.

Application Information

SDS-PAGE and Western blotting analysis of anti-fPSA scFv B8H8

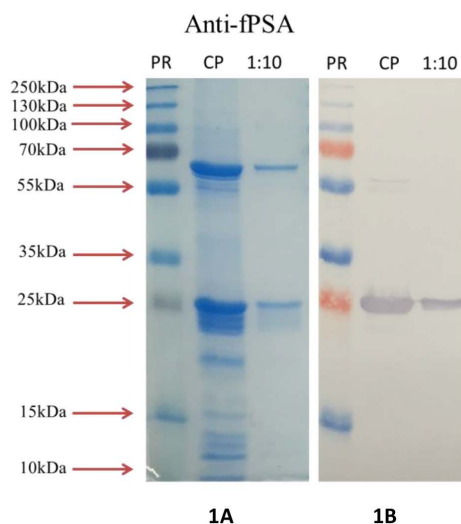


Fig. 1 SDS-PAGE and Western Blot Analysis of anti-fPSA

Figure 1A shows an SDS-PAGE coomassie stained gel containing the scFv (~ 25 kDa). The figure displays first the page ruler (PR), Concentrated Protein and a 1:10 dilution of the antibody. Figure 1B shows a Western blot image probe with anti- HA-HRP confirming the presence of the scFv (~ 25 kDa). The figure displays first the page ruler (PR), Concentrated Protein and a 1:10 dilution of the antibody.

Contact Information

Name	Richard O'Kennedy	Address	School of Biotechnology, Dublin City University, Glasnevin, Dublin 9, Ireland.
Telephone	+353 1 700 5319		
E-mail	richard.okennedy@dcu.ie		