

Product Name: Anti-Aflatoxin (AFB1) Fab (G6)

Overview

Antigen Target	Aflatoxin B1
Epitope	
Antibody type/clonality	Fab antibody fragment
Clone Number	G6
Source/Host	Mouse/Human Chimeric
Species Reactivity	
Applications	ELISA

Properties

Form	Liquid
Purity	
Specificity	LOD 2 ng/mL
Affinity	
Concentration	0.6 mg/mL
Application working concentration	ELISA (1:1,000 - 1:10,000)
Storage	1 x PBS + 0.02% sodium azide

Supply & Storage

Storage Conditions	-20°C in 1 x PBS + 0.02% sodium azide. Avoid repeated freeze and thaw cycles.
Standard Shipping Volumes	200 µL
Shipping Conditions	

Additional Information

Reference on Antibody

Edupuganti, S.R., Edupuganti, O.P., Hearty, S. and O’Kennedy, R., 2013. A highly stable, sensitive, regenerable and rapid immunoassay for detecting aflatoxin B 1 in corn incorporating covalent AFB 1 immobilization and a recombinant Fab antibody. *Talanta*, 115, pp.329-335.

Application Information

SDS-PAGE and Western blotting Analysis

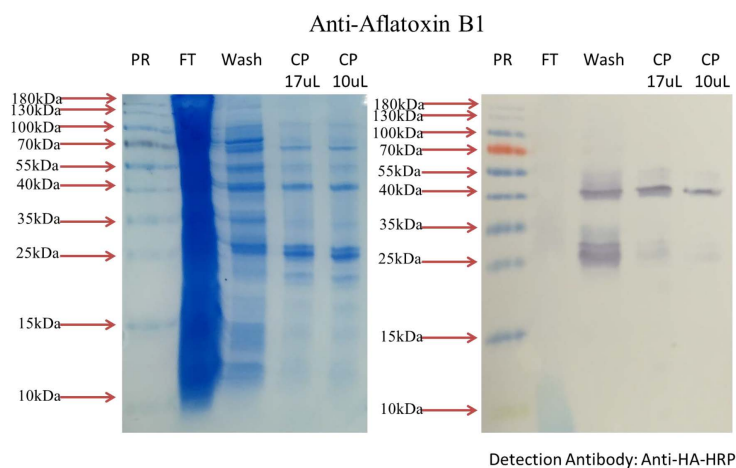


Fig. 1A

Fig. 1B

Fig. 1A SDS-PAGE analysis indicating the presence of the Fab at ~40 kDa.

Fig. 1B Western blotting analysis using Mouse-Anti-HA-HRP as the detection antibody, confirming the presence of the Fab at ~40 kDa.

Contact Information

Name	Richard O'Kennedy	Address	School of Biotechnology, Dublin City University, Glasnevin, Dublin 9, Ireland.
Telephone	+353 1 700 5319		
E-mail	richard.okennedy@dcu.ie		